



Stow Heath Primary School—Year 6 Spring Term Newsletter

Reading

This term our reading focus will be:

- Poetry—Charge of the Light Brigade
- A selection of Harry Potter books



Writing

This term our writing focus will be:

- Narrative poetry
- Non chronological report
- Persuasive writing
- Narrative stories



Numeracy

This term our numeracy focus will be:

- Converting Units
- Ratio
- Algebra
- Decimals
- Decimals, Fractions and Percentages
- Area, perimeter and volume statistics



Reminders:

PE is on Mondays and Tuesdays

How to help your child with their **reading** at home:

- Encourage reading for pleasure at home throughout the week.
- Question your child about the text that they are reading.

How to help your child with their **writing** at home:

- Practice handwriting at home.
- Ensure that your child practises their spellings throughout the week.

How to help your child with their **maths** at home:

- Practise Arithmetic papers sent home every other week.
- Reading through problem solving (written) mathematical questions and breaking them down.
- Times table facts

Key dates:

Year 6 Residential to Robinwood—Wednesday 7th February—Friday 9th February.

SATs week beginning Monday 13th

Science 1

Pupils will learn about the scientific concept of inheritance, how animals adapt to their surroundings and environment and how humans have evolved.



RE

Pupils will study religious charities and their impact on the world as well as looking at the world.



Music

Pupils will learn a New Year carol and 'You've Got a Friend in Me'.



PE

Pupils will focus on dance, gymnastics and tag rugby.



Geography

Pupils will learn about key aspects of human geography such as settlement and land use and economic trade and activity.



Art

Pupils will learn about using watercolour and base this on fantasy illustrations.



History

Pupils will learn about the achievements of the earliest civilisations focussing on Ancient Egyptians.



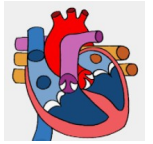
DT

Pupils will develop their understanding of how to use computing to program, monitor and control their products when making a night-light.



Science 2

Pupils will learn about the circulatory system and how diet, drugs and lifestyle can affect our bodies.



PSHE

Pupils will identify their own strengths, set goals and know how to make a positive impact. They will also look at how to maintain a healthy lifestyle.



ICT

Pupils learn about spreadsheets and blogging.



MFL (KS2)

Pupils will develop their knowledge of irregular verbs and learn about the weekend.



Homework Activities for Spring

Choose at least one activity to do each week.

Bring it in to school so we can celebrate
your learning whilst at home.

Help children with maths at home – follow this [link](#)

Help children with reading at home – follow this [link](#)

Help children with writing at home – follow this [link](#)

Literacy

Write a non-chronological report about a mythical creature from a fantasy film or book

Or...

Design a leaflet detailing the reasons for saving protected species.

RE

Research religious Charities and how they help different people around the world. Which is your favourite and why?

Music

Listen to songs written by Carole King. What do you like about this style of music? What is the theme of her music?

PE

Choose a physical activity and set yourself a challenge.

E.g. Do 10 star jumps, 4 times a week.

Visit a park and go on a nature walk once a week.

Geography

Choose a settlement where you would prefer to live as an adult. What are the benefits of living there?

History

Create a fact file about Ancient Egyptians with a did you know section– what is the most interesting thing you have found out about them?

Art

Practise drawing creatures from fantastic beasts– look at there different features and unique colouring.

Maths

Practise column multiplication and division using the formal method and extend to decimals to support with fraction knowledge.

PSHE

Create poster to show the ways you would like to achieve your future goals – what personal and academic skills will help you in the future?

ICT

Purple Mash- weekly spelling tasks. Practise using spreadsheets– this could be a on weekly exercise or amount of time spent on electronic devices.

MFL (KS2)

Practise phonetics by recalling the names of objects and deciding if the are masculine or feminine.

Researching irregular verbs and creating sentences using them.